

COMMENTARY

Open Access



Mistakes from the HIV pandemic should inform the COVID-19 response for maternal and newborn care

Karleen Gribble^{1*} , Roger Mathisen², Mija-tesse Ververs³ and Anna Coutsooudis⁴

Abstract

Background: In an effort to prevent infants being infected with SARS-CoV-2, some governments, professional organisations, and health facilities are instituting policies that isolate newborns from their mothers and otherwise prevent or impede breastfeeding.

Weighing of risks is necessary in policy development: Such policies are risky as was shown in the early response to the HIV pandemic where efforts to prevent mother to child transmission by replacing breastfeeding with infant formula feeding ultimately resulted in more infant deaths. In the COVID-19 pandemic, the risk of maternal SARS-CoV-2 transmission needs to be weighed against the protection skin-to-skin contact, maternal proximity, and breastfeeding affords infants.

Conclusion: Policy makers and practitioners need to learn from the mistakes of the HIV pandemic and not undermine breastfeeding in the COVID-19 pandemic. It is clear that in order to maximise infant health and wellbeing, COVID-19 policies should support skin-to-skin contact, maternal proximity, and breastfeeding.

Keywords: COVID-19, HIV, Prevention of mother-to-child-transmission, Infant and young child feeding in emergencies, Policy development

Background

The care of mothers and infants in the COVID-19 pandemic has proven challenging, as policy makers have grappled with how to protect newborns when their mothers are suspected or confirmed as having COVID-19. For the general population, isolation of the infected from the uninfected and physical distancing are essential to preventing disease transmission and achieving good health outcomes. However, mothers and infants present a special situation as the risk of mother-to-child transmission of SARS-CoV-2 needs to be weighed against the protection from infectious diseases and the support for

bonding and caregiving provided by close maternal proximity and breastfeeding.

In low-, middle- and high-income countries, some policy makers and practitioners appear to have given more weight to the risk of SARS-CoV-2 transmission than the consequences of maternal separation and reducing breastfeeding. At the most extreme, infants are being isolated from their mothers with suspected or confirmed COVID-19 for periods of up to 2 weeks (e.g. [1, 2]). In some contexts, expressed breastmilk may be provided, while in others even provision of breastmilk is prohibited. More commonly, skin-to-skin contact after birth is being withheld and where infants are permitted to share a room with their mothers, a distance of two meters or a screen separates them (e.g. [3, 4]). These decisions reduce infant access to breastfeeding and breastmilk and have been made on the basis of very little evidence. A

* Correspondence: kgribble@westernsydney.edu.au

¹School of Nursing and Midwifery, Western Sydney University, Locked Bag 1797, Penrith, NSW 2751, Australia

Full list of author information is available at the end of the article



© The Author(s). 2020 **Open Access** This article is licensed under a Creative Commons Attribution 4.0 International License, which permits use, sharing, adaptation, distribution and reproduction in any medium or format, as long as you give appropriate credit to the original author(s) and the source, provide a link to the Creative Commons licence, and indicate if changes were made. The images or other third party material in this article are included in the article's Creative Commons licence, unless indicated otherwise in a credit line to the material. If material is not included in the article's Creative Commons licence and your intended use is not permitted by statutory regulation or exceeds the permitted use, you will need to obtain permission directly from the copyright holder. To view a copy of this licence, visit <http://creativecommons.org/licenses/by/4.0/>. The Creative Commons Public Domain Dedication waiver (<http://creativecommons.org/publicdomain/zero/1.0/>) applies to the data made available in this article, unless otherwise stated in a credit line to the data.

similar weighing against breastfeeding was made in the early response to the HIV pandemic.

Discussion

Experience of the HIV pandemic

The possibility of mother-to-child transmission of HIV through breastfeeding was first raised in 1985 in a letter published in the *Lancet* [5]. In this case, an Australian woman who had been given an HIV contaminated blood transfusion for a postpartum haemorrhage, contracted HIV and her infant was also found to be HIV positive [5]. It was proposed that the mother transmitted HIV to her infant through breastfeeding. Shortly thereafter, HIV was isolated in breastmilk [6]. The fear of mother-to-child transmission of HIV through breastmilk led authorities in the USA to quickly respond by recommending that HIV-positive mothers should not breastfeed [7]. Policy makers in the developing world followed suit and HIV-positive women were supplied with free infant formula despite there being no knowledge of the magnitude of risk of HIV transmission through breastfeeding [8].

Replacement infant formula feeding by HIV-positive women was quickly institutionalised in many countries. However, it was not until 1992 that a reliable estimate of HIV transmission through breastmilk was published indicating that after 24 months of breastfeeding 14% of breastfed infants risked contracting HIV [9]. Further research highlighted that this was the cumulative risk and not, as supposed, a one-off risk when mothers commenced breastfeeding, and breastfeeding for a shorter period of 6 months carried a risk of about 4% [10]. In addition, if breastfeeding during the first 6 months was exclusive, this risk was even further diminished. It emerged that supporting exclusive breastfeeding maximized infant HIV-free survival [11].

Rather than improving infant health, policies to move away from supporting breastfeeding in the HIV pandemic had a devastating impact on infant mortality in many middle- and low-income countries. More infants lost their lives through diarrhoea and pneumonia related to infant formula feeding compared to those who lost their lives through HIV infection [11]. The hard lesson was learnt that an HIV negative dead infant is still dead. The aftermath of these recommendations had serious repercussions that lasted for more than a decade as the fear of HIV transmission and the normalisation of bottle feeding changed infant feeding practices. Even in communities that previously had a strong breastfeeding culture, mothers who were HIV-negative opted to infant formula feed with attendant increases in infant morbidity and mortality [11].

Differences between HIV and SARS-CoV-2 infection in infants

While policy development in the HIV pandemic might share some similarities with the COVID-19 pandemic, the method of transmission and the impact of infection on infants are quite different. HIV is a blood borne infection that can be transmitted in utero, during birth, and via breastmilk [12]. HIV can cause serious disease, and before the introduction of effective anti-retroviral treatment, mortality rates of those infected with HIV as infants approached half by 3 years of age [13].

In contrast, SARS-CoV-2 appears to be primarily transmitted through respiratory droplets and contact routes [14]. To date there is no clear evidence that vertical transmission occurs and samples of amniotic fluid, and cord blood taken from mothers with confirmed COVID-19 have been found negative for SARS-CoV-2 [15]. In a small number of cases, viral RNA particles have been detected in expressed breastmilk, but no live virus has been found and breastmilk is not thought to be a transmission route [16, 17]. Antibodies to SARS-CoV-2 have been found in breastmilk suggesting that breastfeeding may provide specific protection against the virus [18]. A recent review of infants born to 655 women with COVID-19 concluded that it was rare for infants to be infected with SARS-CoV-2 and that rates of infection are not increased when infants remain proximate to their mothers and breastfeed [17]. Children infected with SARS-CoV-2 are mostly asymptomatic or have mild symptoms [19]. It seems that fever and cough are relatively the most reported symptoms amongst paediatric cases and many children with SARS-CoV-2 infection might remain undetected. Complications and death appear to be rare [19].

As described, HIV and COVID-19 are starkly different in terms of transmission method and consequences of transmission. Nonetheless, it should be noted that despite the possibility of HIV being transmitted via breastmilk and that, prior to antiretroviral use, infection with HIV was commonly fatal, policies to move away from breastfeeding in the HIV pandemic caused great harm. Since there is no evidence that SARS-CoV-2 is transmitted via breastmilk and COVID-19 is rarely serious in infants, the relative harm of policies impeding breastfeeding in the COVID-19 pandemic may therefore be even greater than was the case for the HIV pandemic.

World Health Organization guidance

On 13 March 2020 the WHO published interim guidance on the clinical management of COVID-19, including on the care of newborn infants [20]. This guidance was heavily weighted towards supporting maternal proximity and breastfeeding. It states that women with suspected, probable or confirmed COVID-19 should be

supported to have their infants placed skin-to-skin with them immediately after birth, initiate breastfeeding within an hour of birth, to keep their infants by their side day and night, and exclusively breastfeed [20]. Alongside these practices, mothers should apply infection prevention and control measures by practicing respiratory hygiene, washing their hands before and after contact with their infants, and ensuring that surfaces that they have been in contact with are cleaned and disinfected [20]. Where mothers are unable to breastfeed because of illness they are to be assisted to express milk for their infants [20]. If this is not possible, the use of donor human milk should be explored and if this is not available wet nursing or infant formula may be considered. Ongoing milk expression and relactation when mothers are well enough is also recommended [20]. Infographics to assist in the promotion of the guidance were released by the WHO, as shown in Figs. 1, 2 and 3. The WHO released updated guidance on the management of COVID-19 on 27 May 2020, the recommendations regarding maternal and newborn care were unchanged [21]. The rationale for these recommendations is based on the importance of breastfeeding in preventing infant morbidity and mortality [20–22].

Importance of breastfeeding

Worldwide, 72% of hospital admissions for diarrhoea and 57% of admissions for respiratory infections can be attributed to a lack of breastfeeding [23]. In low- and middle- income countries, infants who are not breastfed have a mortality rate that is eight times greater than exclusively breastfed infants and globally more than 800,

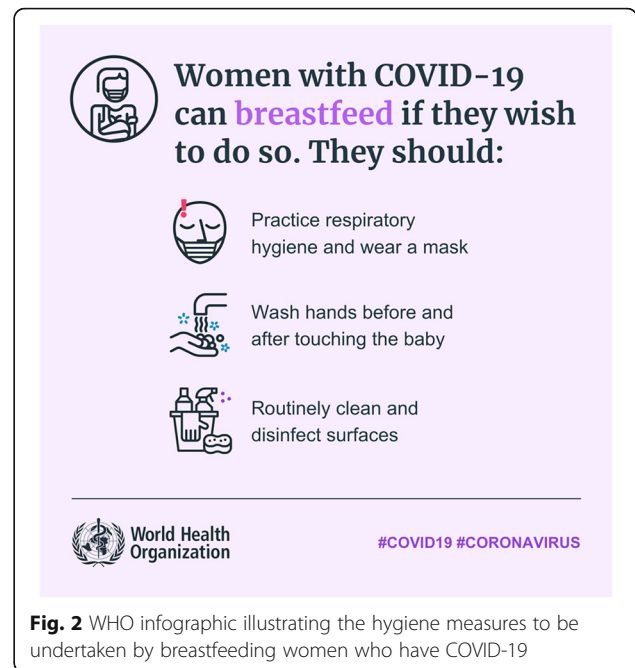


Fig. 2 WHO infographic illustrating the hygiene measures to be undertaken by breastfeeding women who have COVID-19

000 lives could be saved if breastfeeding were universally practiced [23]. Even in high-income countries, hospitalisation rates are greatly elevated in non-breastfed infants [24]. The WHO COVID-19 guidance, notes that health service practices should minimise disruption to breastfeeding [21]. However, COVID-19 policies that require isolation of mothers and infants and denial of breastmilk prevent infants from having access to breastfeeding. Withholding skin-to-skin contact after birth reduces rates of exclusive breastfeeding by one third and

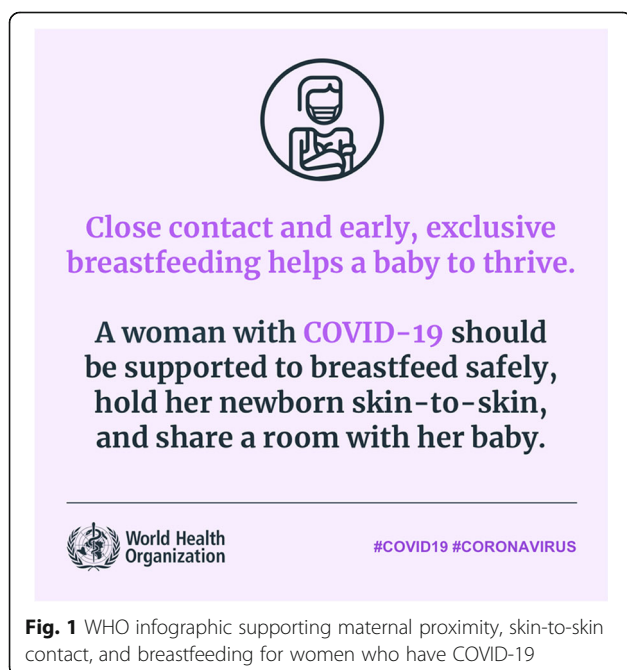


Fig. 1 WHO infographic supporting maternal proximity, skin-to-skin contact, and breastfeeding for women who have COVID-19

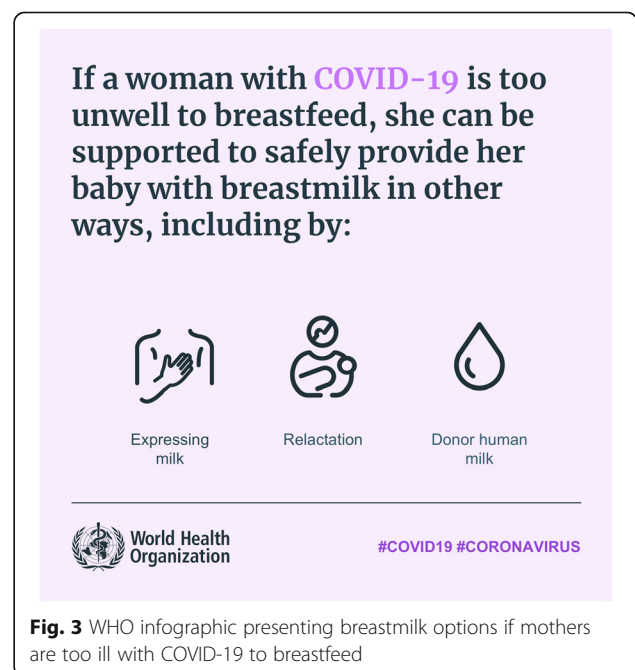


Fig. 3 WHO infographic presenting breastmilk options if mothers are too ill with COVID-19 to breastfeed

impedes maternal bonding and sensitivity [25, 26]. Any increase in physical distance between mothers and infants reduces the frequency of breastfeeding and may therefore negatively impact on the establishment of breastfeeding [27]. Reduction of breastfeeding not only has an impact on infant physical health, but adversely impacts infant cognitive development [28]. It can also reduce maternal caregiving capacity and so result in increased rates of child maltreatment [29]. Maternal deaths due to breast and ovarian cancers as well as type 2 diabetes can also be attributed to short breastfeeding duration practices [28].

Exploitation of the pandemic by the infant formula industry

Policies that impede breastfeeding also enhance the marketing of infant formula as manufacturers can argue that normal prohibition on donations of infant formula do not apply because mothers cannot breastfeed. Donations are a powerful marketing tool that are proscribed by the WHO International Code of Marketing of Breastmilk Substitutes and the Operational Guidance on Infant and Young Child Feeding in Emergencies [30, 31]. However, in the COVID-19 pandemic, infant formula manufacturers and distributors are donating to hospitals, governmental and non-governmental agencies, and individuals worldwide [32–34]. The negative short and long-term harms of donations in emergencies are well known [35]. At all times, but especially in emergencies, protection and support for breastfeeding needs to be strengthened and not undermined [36].

Conclusion

COVID-19 policy makers must learn from past mistakes. In 2010 this journal published a thematic issue on “*HIV and Infant Feeding: Lessons Learnt and Ways Ahead*” in which Moland et al. [37] concluded, “*The scientific evidence base warns against hasty dismissal of the evolved benefits of breastfeeding ... In future, the global health professional community should be more sceptical of claims about the risks of breastfeeding.*” We stand now in the future spoken of, facing a new pandemic. With such substantial, well documented evidence of the importance of maternal proximity and breastfeeding for child survival, development, and health as well as the protection that breastfeeding affords mothers, we cannot repeat the mistakes of the HIV pandemic. Breastfeeding should not be interrupted because of a fear that SARS-CoV-2 could be transmitted from mothers to infants during breastfeeding and so harm infants. Countries, professional associations, and health facilities should follow the lead of the WHO, taking heed of the experiences of the past and take care in the COVID-19 response to not undermine breastfeeding.

Acknowledgements

Not applicable.

Authors' contributions

The authors initiated the manuscript via group discussion. All authors contributed to the drafting of the manuscript and revised the manuscript. All authors agreed to the final manuscript and consent to publication in *International Breastfeeding Journal*. The authors declare no competing interests. The author(s) read and approved the final manuscript.

Funding

This commentary was supported in part by the Bill and Melinda Gates Foundation (PI: Lapping; Grant Number OPP50838). The funding organisation had no role in the writing of this commentary. The views and opinions set out in this article represent those of the authors, and do not necessarily represent the position of the funder.

Availability of data and materials

Not applicable.

Ethics approval and consent to participate

Not applicable.

Consent for publication

Not applicable.

Competing interests

The authors declare that they have no competing interests.

Author details

¹School of Nursing and Midwifery, Western Sydney University, Locked Bag 1797, Penrith, NSW 2751, Australia. ²Alive and Thrive Southeast Asia, FHI 360, 60 Ly Thai To Street, Hanoi, Vietnam. ³Center for Humanitarian Health, Johns Hopkins Bloomberg School of Public Health, Baltimore, MD 21205, USA. ⁴Department of Pediatrics and Child Health, School of Clinical Medicine, University of KwaZulu-Natal, Durban, South Africa.

Received: 19 May 2020 Accepted: 9 July 2020

Published online: 25 July 2020

References

1. Philippine Obstetrical and Gynecological Society. Approach to the management of COVID-19 in pregnancy and the newborn; 2020. <https://www.pogsinc.org/index.php/meetings/aofog-2019/item/566-approach-to-the-management-of-covid-19-in-pregnancy-and-the-newborn>. Accessed 14 May 2020.
2. Wang L, Shi Y, Xiao T, Fu J, Feng X, Mu D, et al. Chinese expert consensus on the perinatal and neonatal management for the prevention and control of the 2019 novel coronavirus infection (first edition). *Ann Trans Med*. 2020; 8(3):47.
3. Instituto Nacional de Perinatología (Mexico). Technical guideline: COVID-19 infection approach in the perinatal period; 2020. <http://www.eneo.unam.mx/novedades/coms130420/LineamientoINPerCOVID19.pdf>. Accessed 14 May 2020.
4. Republic of Vietnam Ministry of Health. Promulgating the interim guidance for acute respiratory infection caused by the SARS-CoV-2 virus strain (COVID-19) in pregnant women and infants; 2020. <https://ncov.moh.gov.vn/-/bo-y-te-huong-dan-du-phong-va-xu-tri-covid-19-o-phu-nu-mang-thai-tre-so-sinh>. Accessed 14 May 2020.
5. Ziegler JB, Cooper DA, Johnson RO, Gold J. Postnatal transmission of AIDS-associated retrovirus from mother to infant. *Lancet*. 1985;1(8434):896–8.
6. Thiry L, Sprecher-Goldberger S, Jonckheer T, Levy J, Van de Perre P, Henrivaux P, et al. Isolation of AIDS virus from cell-free breast milk of three healthy virus carriers. *Lancet*. 1985;2(8460):891–2.
7. Centers for Disease Control. Current trends recommendations for assisting in the prevention of perinatal transmission of human T lymphotropic virus type III/ lymphadenopathy-associated virus and acquired immunodeficiency syndrome. *MMWR*. 1985;34(48):721–6 31–32.
8. Coutsoudis A, Goga AE, Rollins N, Coovadia HM. Free formula milk for infants of HIV-infected women: blessing or curse? *Health Policy Plan*. 2002; 17(2):154–60.

9. Dunn DT, Newell ML, Ades AE, Peckham CS. Risk of human immunodeficiency virus type 1 transmission through breastfeeding. *Lancet*. 1992;340(8819):585–8.
10. Leroy V, Newell ML, Dabis F, Peckham C, Van de Perre P, Bulterys M, et al. International multicentre pooled analysis of late postnatal mother-to-child transmission of HIV-1 infection. Ghent international working group on mother-to-child transmission of HIV. *Lancet*. 1998;352(9128):597–600.
11. Kuhn L, Sinkala M, Thea DM, Kankasa C, Aldrovandi GM. HIV prevention is not enough: child survival in the context of prevention of mother to child HIV transmission. *J Int AIDS Soc*. 2009;12:36.
12. Marinda ET, Moulton LH, Humphrey JH, Hargrove JW, Ntozini R, Mutasa K, et al. In utero and intra-partum HIV-1 transmission and acute HIV-1 infection during pregnancy: using the BED capture enzyme-immunoassay as a surrogate marker for acute infection. *Int J Epidemiol*. 2011;40(4):945–54.
13. Taha TE, Kumwenda NI, Broadhead RL, Hoover DR, Graham SM, Van Der Hoven LEN, et al. Mortality after the first year of life among human immunodeficiency virus type 1-infected and uninfected children. *Pediatr Infect Dis J*. 1999;18(8):689–94.
14. Liu W, Wang J, Li W, Zhou Z, Liu S, Rong Z. Clinical characteristics of 19 neonates born to mothers with COVID-19. *Front Med*. 2020;1:1–6.
15. Yang Z, Liu Y. Vertical transmission of severe acute respiratory syndrome coronavirus 2: a systematic review. *Am J Perinatol*. 2020. <https://doi.org/10.1055/s-0040-1712161>.
16. Costa S, Posteraro B, Marchetti S, Tamburrini E, Carducci B, Lanzone A, et al. Excretion of SARS-CoV-2 in human breast milk. *Clin Microbiol Infect*. 2020. <https://doi.org/10.1016/j.cmi.2020.05.027>.
17. Walker KF, O'Donoghue K, Grace N, Dorling J, Comeau JL, Li W, et al. Maternal transmission of SARS-COV-2 to the neonate, and possible routes for such transmission: a systematic review and critical analysis. *BJOG*. 2020. <https://doi.org/10.1111/1471-0528.16362>.
18. Dong Y, Chi X, Huang H, Sun L, Zhang M, Xie W-F, et al. Antibodies in the breast milk of a maternal woman with COVID-19. *Emerg Microbes Infect*. 2020;9(1):1467. <https://doi.org/10.1080/22221751.2020.1780952>.
19. Raba AA, Abobaker A, Elgenaidi IS, Daoud A. Novel coronavirus infection (COVID-19) in children younger than one year: a systematic review of symptoms, management and outcomes. *Acta Paediatr*. 2020. <https://doi.org/10.1111/apa.15422>.
20. World Health Organization. Clinical Management of Severe Acute Respiratory Infection (SARI) when COVID-19 disease is suspected: interim guidance. Geneva: World Health Organization; 2020. [https://www.who.int/publications-detail/clinical-management-of-severe-acute-respiratory-infection-when-novel-coronavirus-\(ncov\)-infection-is-suspected](https://www.who.int/publications-detail/clinical-management-of-severe-acute-respiratory-infection-when-novel-coronavirus-(ncov)-infection-is-suspected) Accessed 14 May 2020.
21. World Health Organization. Clinical management of COVID-19: interim guidance. Geneva: World Health Organization; 2020. <https://www.who.int/publications/i/item/clinical-management-of-covid-19> Accessed 30 June 2020.
22. World Health Organization. Frequently asked questions: breastfeeding and COVID-19 for health care workers; 2020. https://www.who.int/docs/default-source/maternal-health/faqs-breastfeeding-and-covid-19.pdf?sfvrsn=d8396c0_5 Accessed 30 June 2020.
23. Victora CG, Bahl R, Barros AJD, França GVA, Horton S, Krasevec J, et al. Breastfeeding in the 21st century: epidemiology, mechanisms, and lifelong effect. *Lancet*. 2016;387(10017):475–90.
24. Payne S, Quigley MA. Breastfeeding and infant hospitalisation: analysis of the UK 2010 infant feeding survey. *Matern Child Nutr*. 2016;13(1):e12263.
25. Moore ER, Bergman N, Anderson GC, Medley N. Early skin-to-skin contact for mothers and their healthy newborn infants. *Cochrane Database Syst Rev*. 2016;11:CD003519.
26. Widström A-M, Brimdyr K, Svensson K, Cadwell K, Nissen E. Skin-to-skin contact the first hour after birth, underlying implications and clinical practice. *Acta Paediatr*. 2019;108(7):1192–204.
27. Ball HL, Ward-Platt MP, Heslop E, Leech SJ, Brown KA. Randomised trial of infant sleep location on the postnatal ward. *Arch Dis Child*. 2006;91(12):1005–10.
28. Walters DD, Phan LTH, Mathisen R. The cost of not breastfeeding: global results from a new tool. *Health Policy Plan*. 2019;34(6):407–17.
29. Strathearn L, Mamun AA, Najman JM, O'Callaghan MJ. Does breastfeeding protect against substantiated child abuse and neglect? A 15-year cohort study. *Pediatrics*. 2009;123(2):483–93.
30. Infant and Young Child Feeding in Emergencies Core Group. Infant and young child feeding in emergencies: operational guidance for emergency relief staff and program managers, version 3. Oxford: Infant and Young Child Feeding in Emergencies Core Group; 2017.
31. Sixty-Third World Health Assembly. Infant and young child nutrition. *WHA* 63.23; 2010.
32. How companies are exploiting the COVID-19 pandemic pretending their marketing is 'Humanitarian' and that their products build immunity. <http://www.babymilkaction.org/archives/24341> Accessed 30 June 2020.
33. Countries failing to stop harmful marketing of breast-milk substitutes, warn WHO and UNICEF: Agencies encourage women to continue to breastfeed during the COVID-19 pandemic <http://www.who.int/news-room/detail/27-05-2020-countries-failing-to-stop-harmful-marketing-of-breast-milk-substitutes-warn-who-and-unicef> Accessed 30 June 2020.
34. Now more than ever, Baby Friendly facilities must protect babies from commercial interests <http://www.babyfriendlyusa.org/news/now-more-than-ever> Accessed 30 June 2020.
35. Gribble KD: Formula feeding in emergencies. In: Handbook of dietary and nutritional aspects of bottle feeding. Preedy VR, Watson RR, Zibadi S. Wageningen: Wageningen Academic Publishers; 2014: 143–161.
36. World Health Organization, UNICEF, IBFAN. Marketing of Breast-milk Substitutes: National Implementation of the international code status report. Geneva: World Health Organization; 2020.
37. Moland KMI, van Esterik P, Sellen DW, de Paoli MM, Leshabari SC, Blystad A. Ways ahead: protecting, promoting and supporting breastfeeding in the context of HIV. *Int Breastfeed J*. 2010;5:19.

Publisher's Note

Springer Nature remains neutral with regard to jurisdictional claims in published maps and institutional affiliations.

Ready to submit your research? Choose BMC and benefit from:

- fast, convenient online submission
- thorough peer review by experienced researchers in your field
- rapid publication on acceptance
- support for research data, including large and complex data types
- gold Open Access which fosters wider collaboration and increased citations
- maximum visibility for your research: over 100M website views per year

At BMC, research is always in progress.

Learn more biomedcentral.com/submissions

